

HW1

Math 56

Alex

March 27, 2013

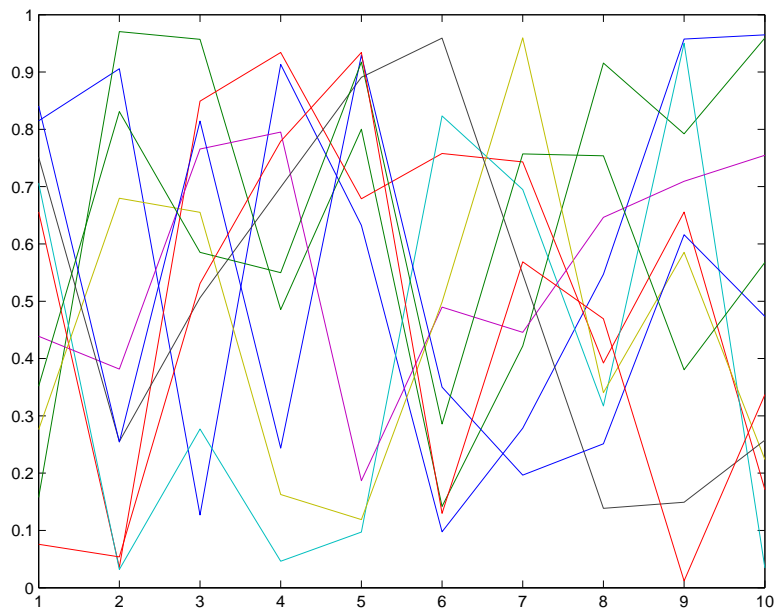
Text.

New paragraph. See equation (1).

Even more hello. Even more hello. Even more hello. Even more hello.

1. Solution to first question.

Now for a picture, which is an EPS file that must be in the current folder:



You can output an EPS file from MATLAB's current figure via e.g.

```
print -depsc squiggle.eps
```

2. Solution to 2nd question.

Math in text $4^{\sin 7}$ is possible. Or a standalone, labelled, formula, like this one

$$\frac{\int_0^\infty x^{-2} dx}{56.7} \quad (1)$$

which gets its own line.

You can use `latex test` to “compile” to a DVI file, then `dvipdf test` to turn this to a PDF, the standard document format.